

## Product datasheet

### V5 TAG MOUSE MONOCLONAL ANTIBODY (E10)

**SKU:** MM-0168-P

100 µg

#### OVERVIEW

**Clonality:**

Monoclonal

**Host:**

Mouse

**Application:**

ELISA, Dot, IP, IHC, WB

**Target:**

V5 Tag

**Target background:**

Epitope tags have applications in the labeling, isolation and detection of proteins using immunoblotting, Immunoprecipitation and immunostaining techniques. Epitope tags can be used, by affinity chromatography, to separate recombinant, overexpressed protein from wild-type protein expressed by the host organism. Due its small size the protein's biochemical properties seem not to be affected by the tag protein. The V5 tag antibody can be used in many different assays that require recognition by an antibody.

**Immunogen:**

The antibody was raised against GKPIPPLLGLDST (V5) synthetic peptide conjugated to KLH.

**Specificity:**

The antibody recognizes V5 tag (GKPIPPLLGLDST) and tagged fusion proteins.

**Clone ID:**

E10

**Isotype:**

IgG1

**Preservative:**

None

**Format:**

Lyophilized protein G purified in PBS pH7.4

**Recommend starting dilution:**

If reconstituted with deionized water in 100  $\mu$ l: WB 1:1000-3,000, IHC 1:500-2,000.  
Optimal dilution has to be determined by the user.

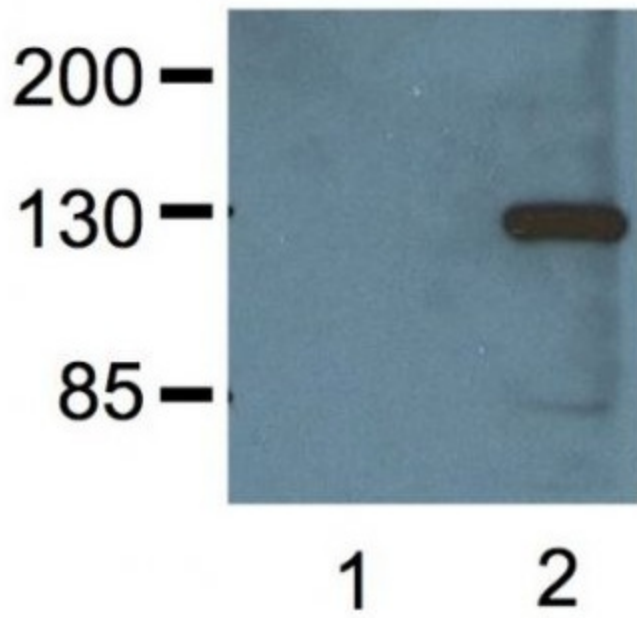
**Limitations:**

Research Use Only

**References:****Storage:**

Lyophilized antibodies can be kept at 4°C for up to 3 months and should be kept at -20°C for long-term storage (2 years). To avoid freeze-thaw cycles, reconstituted antibodies should be aliquoted before freezing for long-term (1 year) storage (-80°C) or kept at 4°C for short-term usage (2 months). For maximum recovery of product, centrifuge the original vial prior to removing the cap. Further dilutions can be made with the assay buffer. After the maximum long-term storage period (2 years lyophilized or 1 year reconstituted) antibodies should be tested in your assay with a standard sample to verify if you have noticed any decrease in their efficacy.

Image:



Western blot analysis of HEK293 cells transfected with V5-tagged protein vector. 1:1000 (1 $\mu$ g/mL) Ab dilution. Non-transfected (1) and transfected (2).

